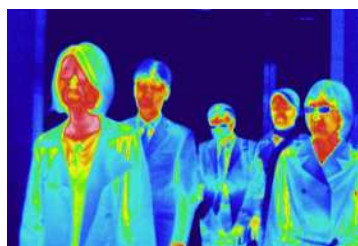


Body Surface Temperature Screening with Alarm Function TVS-200IS/ TVS-500IS

TVS-200IS/TVS-500IS are ideal equipment for you to conduct screening safely and efficiently of those who may potentially be infected with flu. Body temperature of those infected is expected to be around 38~39°C while adult human normal temperature should be around 36°C. Thermal imaging camera can visualize such temperature difference instantly from safe distance for you to segregate those who may have been infected.



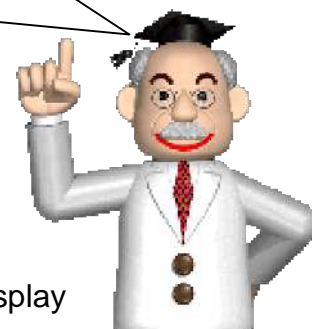
Visual Image



Thermal Image



Mixing Function + Isotherm Display



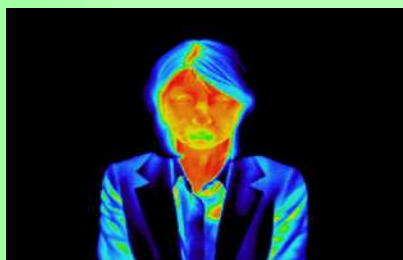
- Visual image can not detect fever & abnormal temperature.
- Distance of 2m+ is required to prevent infection.
- Difficult to determine with thermal image only.
- Possibility to overlook when monitoring image only.
- It takes time when using normal thermometer.



With TVS-200IS/TVS-500EX

- Pick out fever from safe place.
- Detect person with fever instantly.
- Real-time screening can be performed with Isotherm display + mixing function.
- Alarm function prevent from overlooking.

Isotherm Function for easier fever detection



Thermal Image



Isotherm Image

IS series Main Features and Functions

- ◆ It can measure human body surface temperature **with no contact**.
(Measurement range:-10 to 60°C)
- ◆ Top level resolution with non-contact measurement (**Accuracy ±1°C**: at 30°C Black Body, Center Spot)
- ◆ Alarm Display when detecting temperature over preset value
- ◆ **Isotherm function(Color Alarm)**: Color Display of temperature range over preset value **helps to determine abnormal temperature easily**.
- ◆ **Alarm output function** to set up external alarm unit incorporated with lamp and buzzer.
- ◆ **Fusion function (Mixing of both thermal and visual image)** for easier identification of those being inspected.
- ◆ Video output (NTSC or PAL) enables to connect to external video monitor.
- ◆ **Small size & light weight** for portability of product.
- ◆ **Made in Japan**. Japanese export license is required.

TVS-200IS



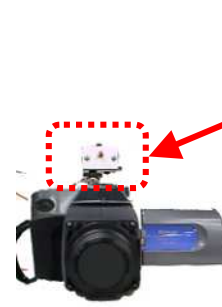
FOV(Field of view)
30.6° (H) x 23.1° (V)
For wide area measurement
(with 14mm standard lens)
Temperature resolution
0.08°C (with averaging)
Spatial resolution 1.68mm
(1pixel size at 1m distance)

TVS-500IS



FOV(Field of view)
19.4° (H) x 14.6° (V)
(with 22mm standard lens)
Temperature resolution
0.05°C (with averaging)
Spatial resolution 1.07mm
(1pixel size at 1m distance)
Remote Controller(Optional)
(Enable to operate from distance)
Application Software
Built-in "Advanced Package"
Easy to transfer thermal & visible
images to PC just connecting
with USB cable.

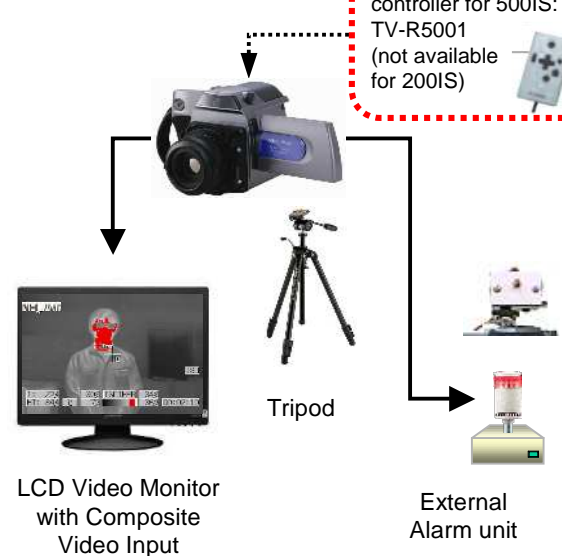
Options



Alarm Lamp & Buzzer
unit (optional)

Suggested System Configuration with Alarm Function

Thermal Imager TVS-500IS or TVS-200IS



*Images for reference only. Actual appearance is
subject to change without prior notice.

Basic Specifications

Measuring range	-10 to 60°C (for human body temperature)
Accuracy (*1)	±1.0°C (ambient 20-30°C, when measuring black body at 30°C)
Detector	320 x 240 UFPA
Focusing range	30cm to infinity
Frame time	60 frames per second
Alarm output	Contact signal output
Video output	NTSC or PAL
Isotherm function	Displays preset Isothermal band in color
Visible camera	Built-in
Mixing image	Display of thermal image over visible with transmission

*1: Accuracy is valid for the center of screen. Please ask your local distributor for details.

NOTE: This thermal imaging camera should not be used for medical purpose.

Other Notes:

- This device is to measure 'Surface Temperature' of different objects. So, the indicated temperature may differ from the one acquired by regular or medical thermometer depending on conditions.
- For instance, Front hair on forehead interferes to measure body surface temperature of the part.
Temperature indicated may be lower than actual right after washing face, at wet skin with sweat or when coming from cold place.
Higher temperature than actual may be indicated after exercise, when holding a heat source as pocket warmer, or when hot object is around.
- Measured value of body surface temperature is NOT real body temperature. Precise body temperature has to be measured by clinical thermometer under appropriate consultation of medical experts.
- The products are made in Japan. The Japanese export license is required.

- ◆ Described company and model names are registered brand or trademark.
- ◆ Above images do not reflect actual size of products.
- ◆ Specifications and appearance of above products are subject to change without prior notice.



**CAUTION
FOR SAFETY**

Please read "WARNING" & "CAUTION" in the operation manual attached to the product carefully for proper operation before using the product.

NEC Avio Infrared Technologies Co., Ltd.

1-5, Nishi-Gotanda 8-chome, Shinagawa-ku
Tokyo 141-8535 Japan
Phone: +81-3-5436-1614
Fax: +81-3-5436-1395
Email: osd@nec-avio.co.jp
Web: www.nec-avio.co.jp/en/

Distributor: